

The home of the turntable

THE VINYL ENGINE®

For more turntable manuals and setup information
please visit www.vinylengine.com

UPX-003B

**PHONO-MICROPHONE
PREAMPLIFIER**

FOR

G-E VARIABLE RELUCTANCE CARTRIDGES

AND

OTHER LOW LEVEL MAGNETIC PICKUPS

AND

MICROPHONES

GENERAL  ELECTRIC

SPECIAL PRODUCTS

TELEVISION RECEIVER DEPARTMENT

ELECTRONICS PARK • SYRACUSE • NEW YORK

BASS COMPENSATION

The preamplifier is provided with feedback circuit C6, R11 and R13 which gives a rising bass characteristic in order to compensate for the voltage drop due to the constant amplitude recording used in discs at low frequencies.

TREBLE COMPENSATION

Treble compensation can be accomplished by choosing a suitable resistor for R1, shown in the schematic diagram. The higher the value of this resistor, the greater the high frequency output of the cartridge. The value of this resistor may be varied from 6200 ohms to 100,000 ohms.

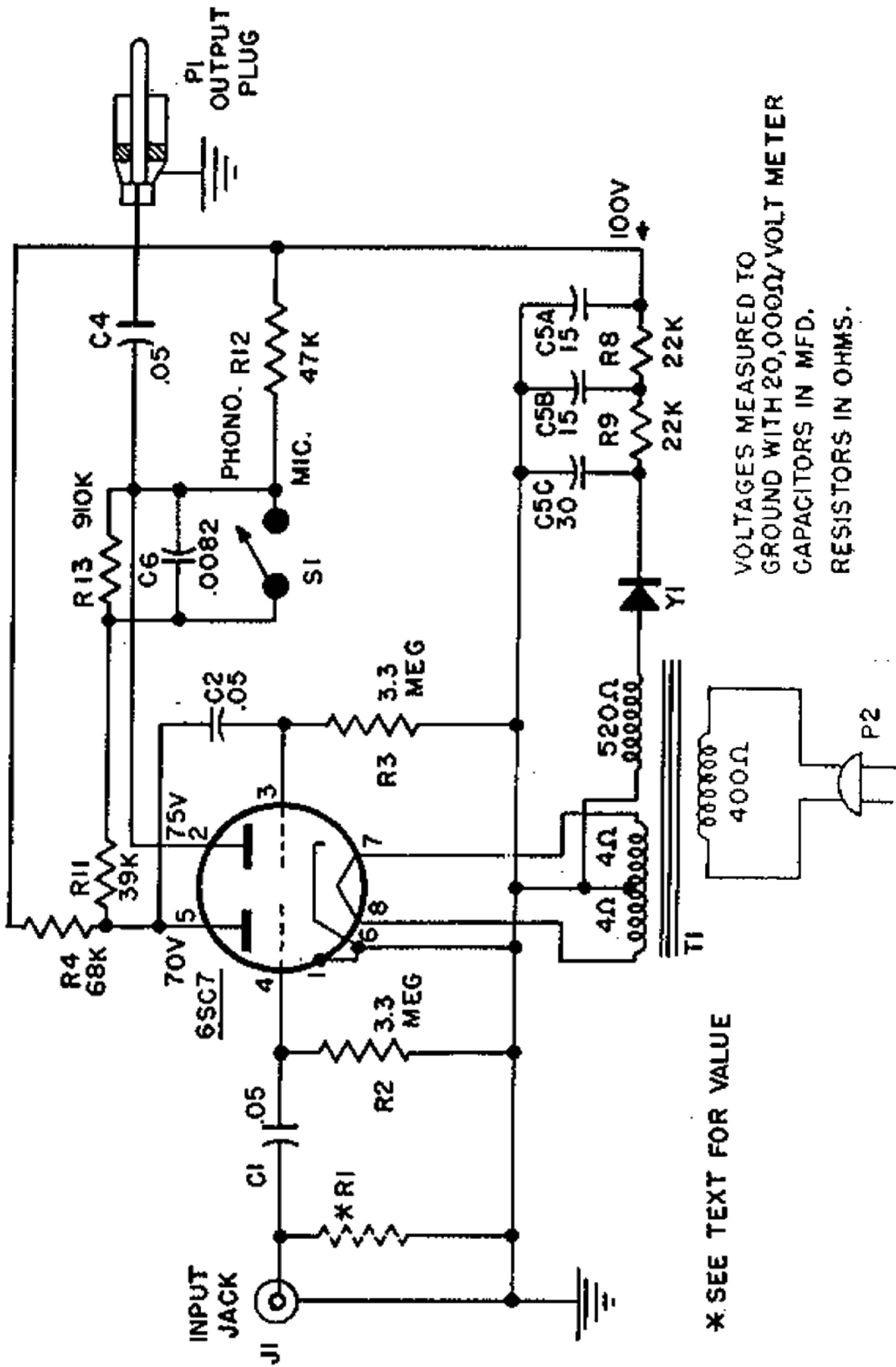
To obtain standard (RIAA) treble roll-off, the value of R1 should be 6200 ohms. A 6200-ohm resistor is packed in an envelope with the UPX-003B.

RECORD FILTER—The G-E Model A1-901 Record Filter combines the functions of a rumble filter, a record compensator and a high cut-off filter in one attractive unit. When using this unit with the UPX-003B, the cartridge load resistor R1 mentioned above should not be used.

MICROPHONE PREAMPLIFIER

A high impedance microphone may be used with the UPX-003B by plugging it into the input jack and switching S1 to the "MIC" position. The input load resistor (R1) should meet the specifications of the microphone manufacturer for proper microphone frequency response and sensitivity.

Caution should be observed when using the UPX-003B as both a microphone and a phono preamplifier that the proper value of R1 is always used.



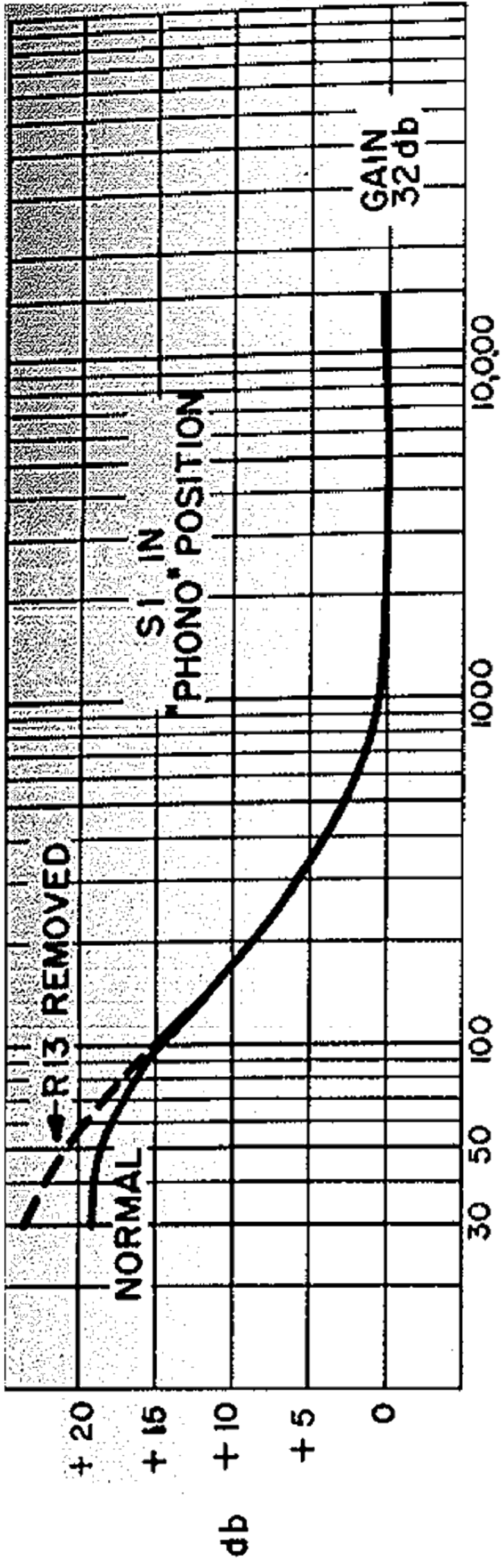
* SEE TEXT FOR VALUE

VOLTAGES MEASURED TO
GROUND WITH 20,000Ω/VOLT METER
CAPACITORS IN MFD.
RESISTORS IN OHMS.

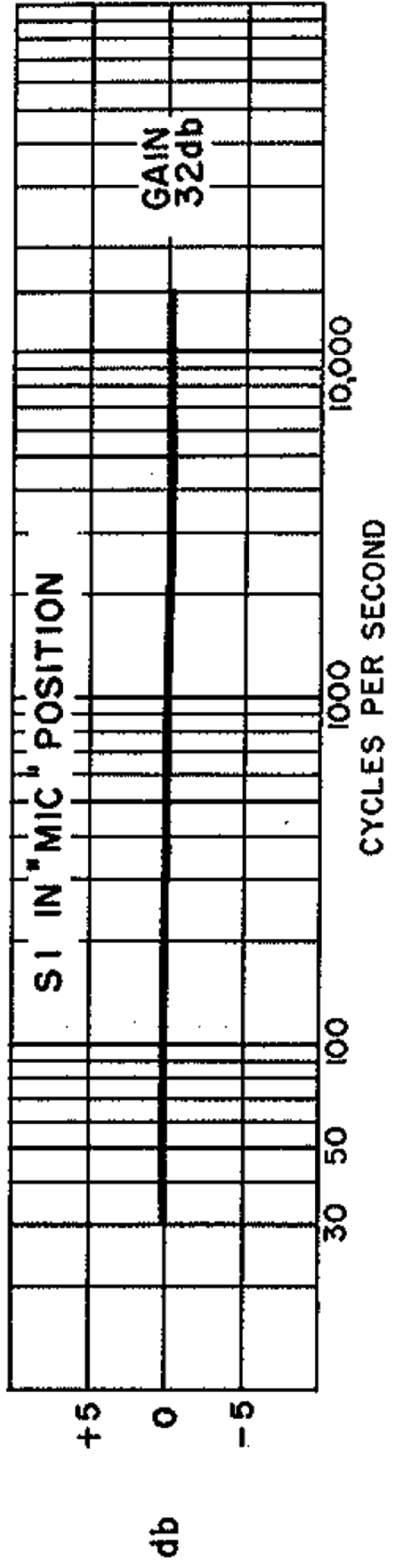
117 V. AC 50/60 CYCLES

P125J241

SCHEMATIC DIAGRAM



5



RESPONSE CURVES

WARRANTY

General Electric Company warrants to the purchaser of each new General Electric phono preamp. that any part thereof which proves to be defective in material or workmanship within ninety (90) days from the date of original purchase for use will be repaired or replaced in accordance with the terms of this warranty. Within said ninety (90) day period any such defect should be brought to the attention of the General Electric dealer from whom the phono preamp. was purchased. If, upon examination, the part is in fact determined to be defective in material or workmanship, the dealer will furnish the purchaser with a repaired or replacement part. The responsibility of the General Electric Company is limited to making a repaired or replacement part available to the purchaser, and does not include the furnishing of any labor involved or connected therewith, such as that required to diagnose trouble or to remove or install any such parts; nor does it include responsibility for any transportation expense, such as that required for the return of defective parts to the dealer, distributor or manufacturer.

This warranty is made only to purchasers located and purchasing within the United States and the Territory of Hawaii. The Company makes no warranty express or implied to other purchasers located elsewhere.

The foregoing is in lieu of all other warranties, express, implied or statutory, and General Electric Company neither assumes nor authorizes any person to assume for it any other obligation or liability in connection with said preamp.

REPLACEMENT PARTS LIST

Cat. No.	Symbol	Description
UNIVERSAL REPLACEMENT PARTS		
RCN-045 UCC-635	C6 C1, 2, 4 R8, 9*	CAPACITOR—.0082 mf., 400 v., paper CAPACITOR—.05 mf., 400 v., paper
	R11*	RESISTOR—22,000 ohms, 1/2 watt, carbon
	R12*	RESISTOR—39,000 ohms, 1/2 watt, carbon
	R4*	RESISTOR—47,000 ohms, 1/2 watt, carbon
URD-1068	R2, 3* R1	RESISTOR—68,000 ohms, 1/2 watt, carbon RESISTOR—3.3 meg., 1/2 watt, car. RESISTOR—6200 ohms, $\pm 5\%$, 1/2 watt, carbon
URD-1120	R13	RESISTOR—910K ohms, $\pm 5\%$, 1/2 watt, carbon
SPECIALIZED REPLACEMENT PARTS		
RCE-074	C5A, B, C	CAPACITOR—Electrolytic capacitor, 15 x 15 x 30 mf., 150 v.
RER-011	Y1	RECTIFIER—Selenium rectifier
RJP-004	P1	PLUG—Phono output plug
RJP-018	J1	JACK—Phono input jack
RJS-037		PLATE—Electrolytic mounting plate
RJS-085		SOCKET—Tube socket
RPX-034		ASSEMBLY—Pickup lead assembly
RTP-307	T1	TRANSFORMER—Power trans- former
RSS-011	S1	SWITCH—Phono-mic switch
RWL-009		CORD—Power cord

* Resistors shown without catalog numbers are common 10% tolerance resistors available from your Radio Parts Jobber.

