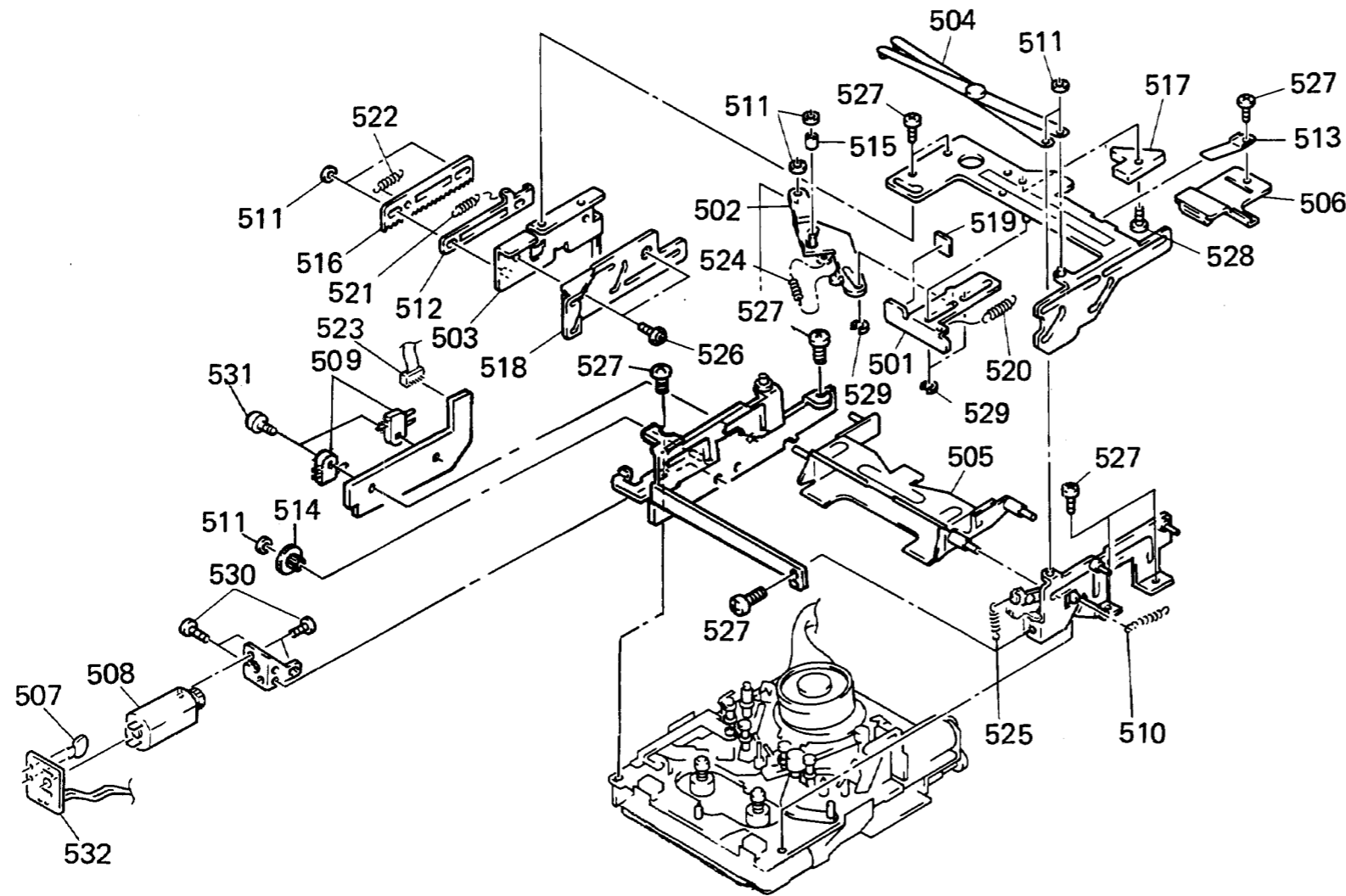


CASSETTE COMPARTMENT

CASSETTE COMPARTMENT

CASSETTE COMPARTMENT



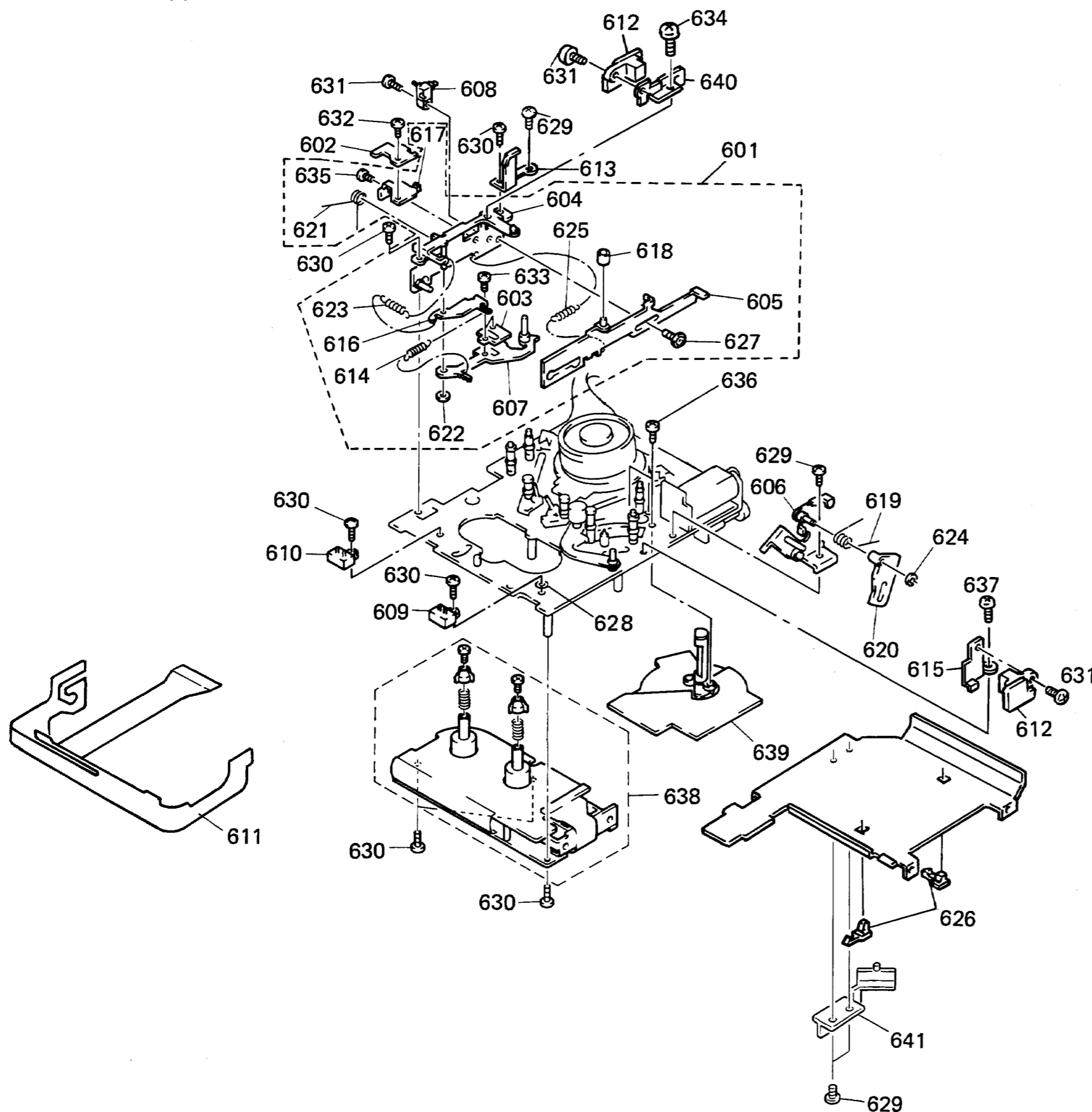
Index

No.	Parts No.	SP Description
501	X-3346-903-1	o SLIDER (EJ) ASSY
502	X-3346-904-1	o LEVER (EJ) ASSY
503	X-3346-905-1	o BRACKET (RODER) ASSY
504	X-3346-906-1	o LEVER (X) ASSY
505	X-3346-913-1	o HOLDER ASSY, CASSETTE
506	X-3346-916-2	o LEVER (LOCK) ASSY
507	1-161-055-00	s CAP, CERAMIC 0.022 20% 25V
508	X-3165-836-1	s MOTOR ASSY
509	1-570-771-11	s SWITCH
510	3-305-523-00	s SPRING, TENSION
511	3-321-813-01	s WASHER, COTTER POLYETHYLENE
512	3-346-912-01	o LIMITER (RACK)
513	3-346-915-01	s SPRING (LOCK)
514	3-346-918-11	s WHEEL, WORM
515	3-346-936-01	s ROLLER
516	3-346-949-01	s RACK
517	3-346-950-01	o PLATE, CAM
518	3-346-955-01	s RODER (SUB)
519	3-346-962-01	o CUSHION (EJ)
520	3-346-963-01	s SPRING, TENSION
521	3-346-964-01	s SPRING, TENSION
522	3-346-965-01	s SPRING, TENSION
523	1-946-957-11	o HARNESS (CCP)
524	3-570-892-00	s SPRING, TENSION
525	4-877-850-00	s SPRING, TENSION
526	7-621-255-15	s SCREW +P 2x3
527	7-621-772-08	s SCREW +B 2x3
528	7-621-772-20	s SCREW +B 2x5
529	7-624-102-04	s STOP RING 1.5, TYPE-E
530	7-627-554-07	s SCREW, PRECISION +P 2x2.2
531	7-627-554-27	s SCREW, PRECISION +P 2x6
532	1-640-230-11	s PC BOARD, MTR

注 意: この頁の部品は、A-7806-080-Cの構成部品です。

NOTE: The parts on this page are component parts of A-7806-080-C.

MECHANISM DECK(1)



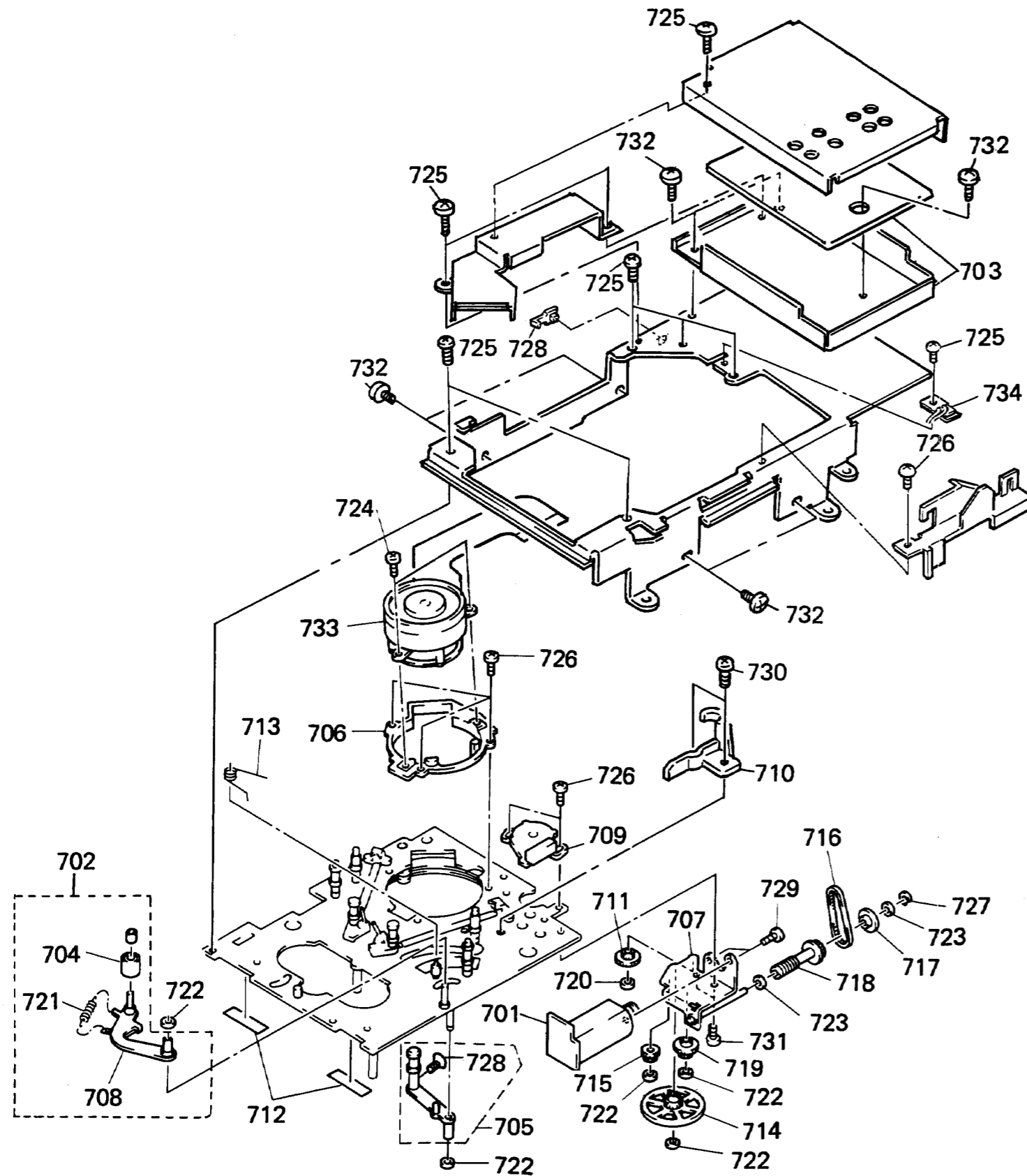
Index

No.	Parts No.	SP	Description
601	A-7810-486-A	s	TENSION REGULATOR ASSY
602	A-7850-780-A	o	MOUNTED PCB, TENSION REGULATOR
603	X-3337-611-1	s	HOLDER ASSY, MAGNET
604	X-3337-619-1	o	CHASSIS ASSY, TENSION REGULATOR
605	X-3337-627-1	s	SLIDER ASSY, MODE
606	X-3362-707-1	o	OPENER (R) ASSY, LID
607	X-3362-045-1	s	LEVER(TENSION REGULATOR) ASSY
608	1-570-771-11	s	SWITCH
609	1-570-883-11	s	SWITCH, PUSH (2 KEY)
610	1-570-883-21	s	SWITCH, PUSH (2 KEY)
611	1-637-288-11	s	PC BOARD, HN-151 FLEXIBLE
612	1-807-698-11	s	PHOTO SENSOR
613	3-167-379-01	o	OPENER(L), LID
614	3-307-377-00	s	SPRING, TENSION
615	3-337-610-01	o	BRACKET(RIGHT), E DETECTION
616	3-337-657-01	o	LEVER, LIMITER
617	3-337-662-01	o	BRACKET, HOLE ELEMENT
618	3-337-664-01	s	ROLLER
619	3-346-911-01	s	SPRING (LO)
620	3-346-954-01	s	LEVER (LO DRIVING)
621	3-352-502-01	s	SPRING
622	3-559-408-11	s	WASHER, POLYETHYLENE, DIA.1.2
623	3-561-626-00	s	SPRING, TENSION
624	3-570-615-00	s	POLY-WASHER
625	3-570-892-00	s	SPRING, TENSION
626	3-671-150-01	o	CLAMP
627	3-703-502-11	s	SCREW
628	4-918-886-01	s	WASHER, THRUST
629	7-621-772-08	s	SCREW +B 2x3
630	7-621-772-18	s	SCREW +B 2x4
631	7-621-772-20	s	SCREW +B 2x5
632	7-627-551-17	s	SCREW, PRECISION +P 1.4x2
633	7-627-551-87	s	SCREW, PRECISION +P 1.4x1.8
634	7-627-552-18	s	SCREW, PRECISION +B 1.7x1.6
635	7-627-552-27	s	SCREW, PRECISION +B 1.7x2
636	7-627-552-47	s	SCREW, PRECISION +P 1.7x4
637	7-627-854-07	s	SCREW, PRECISION +P 2x2.5
638	8-835-205-01	s	MOTOR, DC U-2A
639	8-835-206-01	s	MOTOR, DC BHF-2803A
640	3-166-932-01	o	BRACKET(L), E DETECTION
641	3-171-908-01	o	GUARD, FLEXIBLE

注 意; (606)、(619)、(620)、(624)を除くすべての部品は、A-7806-080-Cの構成部品です。

NOTE; Except for (606), (619), (620) and (624) all the parts are component parts of A-7806-080-C.

MECHANISM DECK(2)



E-21

Index

No.	Parts No.	SP	Description
701	X-3337-648-1	s	MOTOR ASSY, CONTROL
702	A-7810-488-A	s	PINCH ROLLER BLOCK ASSY
703	A-7810-495-A	o	RF-31 ASSY
704	X-3337-610-1	s	PINCH ROLLER ASSY
705	A-7810-553-B	s	ARM ASSY, F
706	X-3337-614-1	o	SLANT ASSY
707	X-3337-617-1	o	BRACKET ASSY, CONTROL MOTOR
708	X-3337-660-1	s	ARM (PINCH ROLLER) ASSY
709	1-464-724-11	s	ENCODER, ROTARY
710	3-168-976-01	s	GUARD, TAPE
711	3-337-669-01	s	GEAR, MIDWAY
712	3-337-696-01	o	SHEET, INSULATING
713	3-345-046-01	o	SPRING
714	3-345-181-01	s	GEAR (LOADING A)
715	3-345-182-01	s	GEAR (LOADING B)
716	3-346-908-01	s	BELT
717	3-346-909-01	s	COLLAR (WORM)
718	3-346-910-01	s	PULLEY (WORM)
719	3-352-501-01	s	WHEEL, WORM
720	3-559-408-11	s	WASHER, POLYETHYLENE, DIA.1.2
721	3-547-659-00	s	SPRING, TENSION
722	3-701-436-11	s	WASHER, 1.6 POLYETHYLENE
723	3-701-437-21	s	WASHER
724	7-621-255-25	s	SCREW +P 2x4
725	7-621-772-08	s	SCREW +B 2x3
726	7-621-772-18	s	SCREW +B 2x4
727	7-624-102-04	s	STOP RING 1.5, TYPE -E
728	3-671-150-11	o	CLAMP
729	7-627-553-17	s	SCREW, PRECISION +P 2x2
730	7-627-852-18	s	SCREW, PRECISION +P 1.7x4
731	7-628-253-00	s	SCREW +PS 2x4
732	7-682-547-04	s	SCREW +B 3x6
733	8-848-548-11	s	DRUM ASSY DOH-14A-R
734	1-808-281-52	s	SENSOR

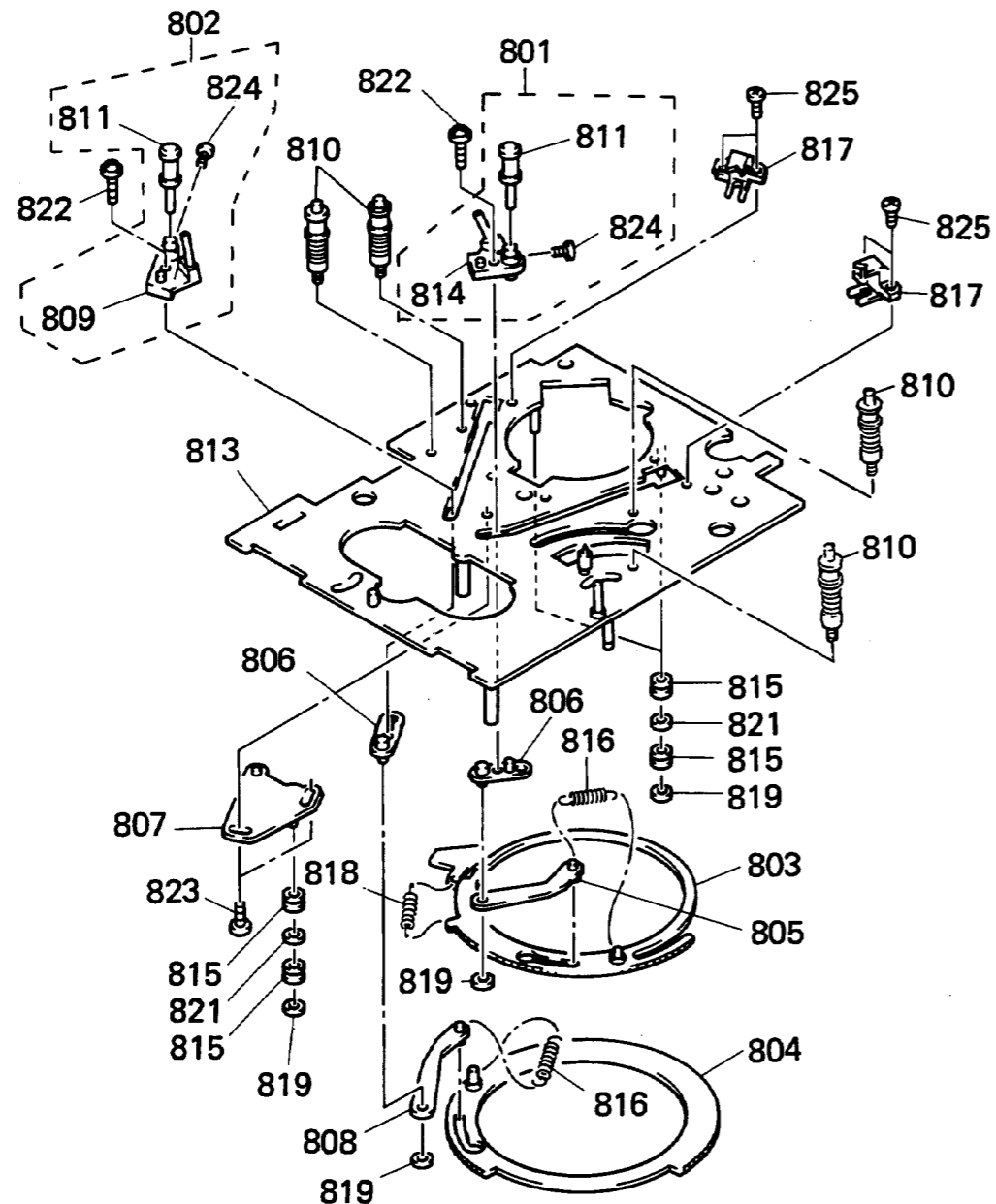
注 意: この頁の部品は、A-7806-080-Cの構成部品です。

NOTE: The parts on this page are component parts of A-7806-080-C.

E-22

PCM-7030 (J,UC,EK)

MECHANISM DECK(3)



Index

No.	Parts No.	SP	Description
801	A-7810-492-C	s	GUIDE (R) ASSY
802	A-7810-493-C	s	GUIDE (L) ASSY
803	X-3337-601-1	s	RING (RIGHT) ASSY, LOADING
804	X-3337-602-1	s	RING (LEFT) ASSY, LOADING
805	X-3337-603-1	s	ARM (RIGHT) ASSY, LOADING
806	X-3337-604-1	s	PLATE ASSY, LOADING
807	X-3337-605-1	o	ARM ASSY, RING ROLLER
808	X-3337-607-1	o	ARM (LEFT) ASSY, LOADING
809	X-3337-615-1	s	SLANT BLOCK (LEFT) ASSY
810	A-7810-552-B	s	AP R.G ASSY
811	X-3362-671-1	s	GUIDE ASSY, ROLLER
813	X-3337-625-1	o	CHASSIS ASSY, MECHANICAL
814	X-3337-647-1	s	SLANT BLOCK (RIGHT) ASSY
815	3-337-622-01	s	ROLLER, RING
816	3-337-653-01	s	SPRING, TENSION
817	3-337-685-01	o	CATCHER
818	3-547-659-00	s	SPRING, TENSION
819	3-559-408-11	s	WASHER, POLYETHYLENE, DIA.1.2
821	3-701-436-11	s	WASHER, 1.6 POLYETHYLENE
822	3-703-502-81	s	SCREW
823	7-621-772-08	s	SCREW +B 2x3
824	7-627-551-17	s	SCREW, PRECISION +P 1.4x2
825	7-627-552-47	s	SCREW, PRECISION +P 1.7x4

注 意: この頁の部品は、A-7806-080-Cの構成部品です。

NOTE: The parts on this page are component parts of A-7806-080-C.