

## Specifications

Inputs: PHONO (for magnetic or dynamic pickup)  
100 kOhm, asymmetrical, sensitivity 5 mV  
TAPE 300 kOhm, " " 1.2 V  
RADIO 1/2 220 kOhm, " " 150 mV

Outputs: tape, 150 mV  
speaker, 4 / 8 / 16 Ohm, switchable

Phono equalization: according to RIAA (see diagram)

"Bass" control: 7 stages of 4 db each at 50 cps; +12, +8, +4, 0, -4, -8, -12 db

"Treble" control: 7 stages of 4 db each at 10 kc; +12, +8, +4, 0, -4, -8, -12 db  
(adjustable frequency responses see diagram)

"Balance" control: adjusting range 10 db

Frequency response: 30 to 20'000 cps  $^{+0}_{-1}$  db, measured at radio input, bass and treble  
controls in position 0

Signal-to-noise ratio:  $\geq$  60 db for  $N_a = 10$  watts, max. volume, inputs short-circuited

Crosstalk damping:  $\geq$  60 db, 50 to 15'000 cps, max. volume, inputs short-circuited

Output power: 10 watts each channel, peak 12.5 watts

Harmonic distortion:  $\leq$  0.5 % at 10 watts and 1000 cps (see diagram)

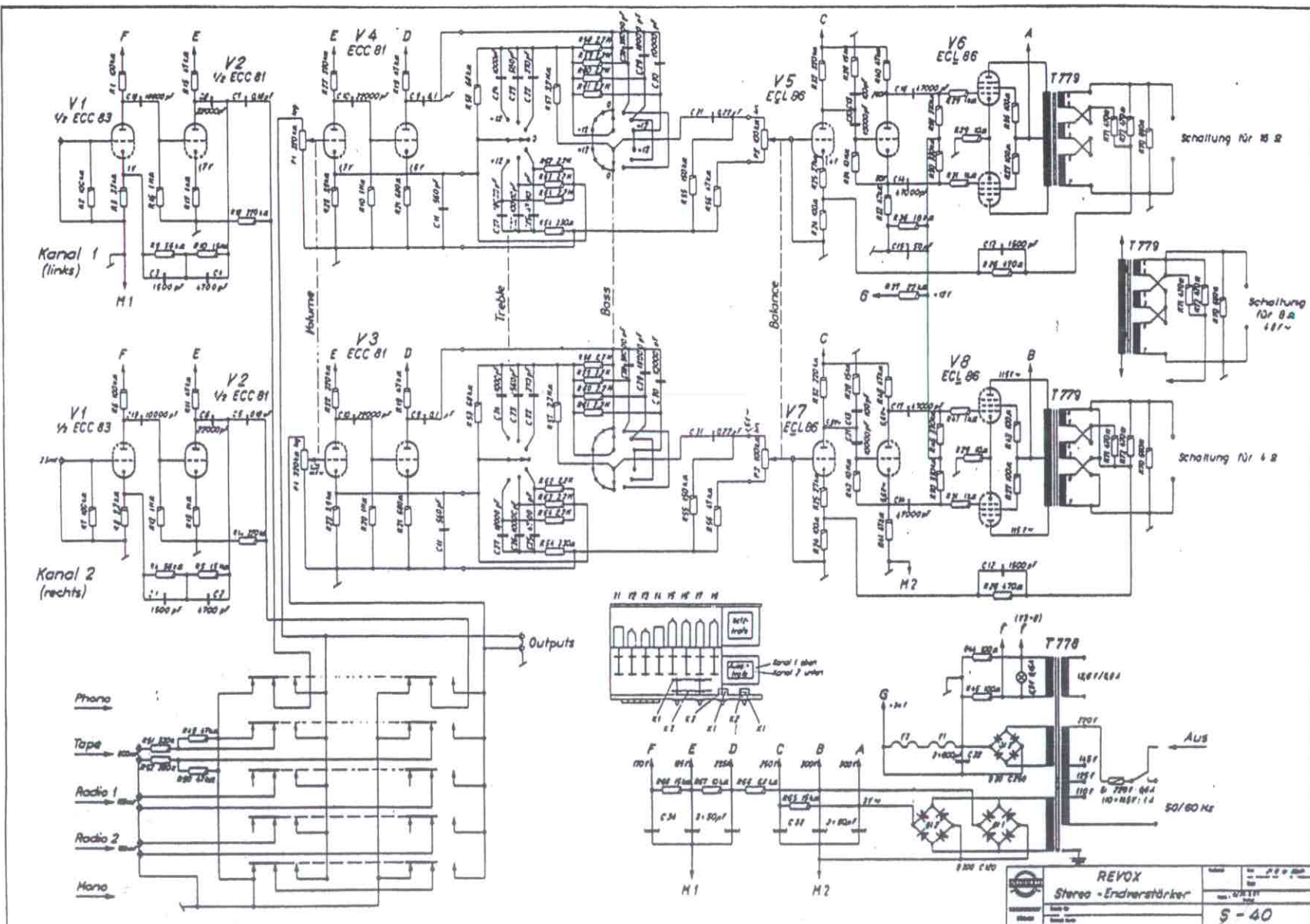
Power supply: 110, 125, 145, 220 V a.c., 50 - 60 cps

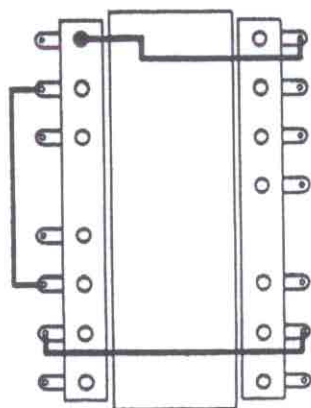
Power consumption: about 80 watts

Tube complement: 1 x ECC 83, 3 x ECC 81, 4 x ECL 86

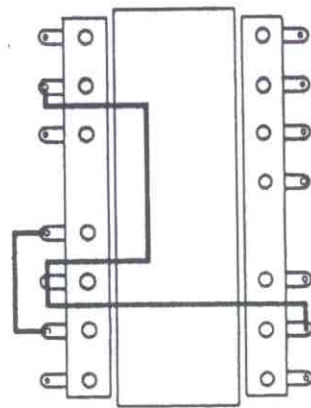
Overall dimensions: 15 $\frac{3}{8}$  in. wide, 10 $\frac{1}{4}$  in. deep, 4 $\frac{1}{4}$  in. high

Weight: 20 $\frac{1}{4}$  lbs.

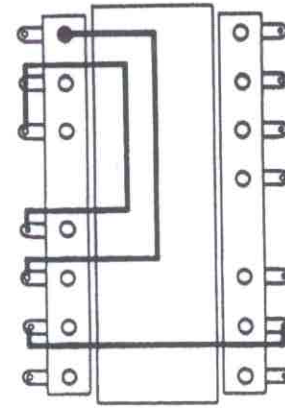




16 Ω



8 Ω



4 Ω